



Integrated
Territorial Investments
for Greater Warsaw

Integrated Territorial Investments for Warsaw Metropolis



Warsaw, 26.11.2020



Integrated Territorial Investments for Greater Warsaw

Presentation plan



- Integrated Territorial Investments (ITI's) in Poland
- ITI's in Warsaw Functional Area
- Main achievements and future challenges



ITI's in Poland – main objectives



- Fostering cooperation across levels of government in **functional urban areas** (local, regional, national)
- Implementation of integrated projects – comprehensive response to specific needs and challenges of a functional area
- Increasing influence of local authorities on the policy and actions delivered in functional areas – in particular under EU cohesion policy programmes
- Fostering cooperation between different types of areas – rural and urban

- _____

Warsaw Functional Area



Number of municipalities – 40

Population – 2.7 mln (over 50% of Mazovia Region)

Area – 2.900 square km (8% of Mazovia Region)

ITI allocation – 167.1 mln EUR (142,1 mln ERDF, 25 mln ESF)



ITI's for the Warsaw Functional Area

Initial situation (2013)



- Communes cooperate within the county borders (or bilateral Warsaw)
- Bilateral agreements in transportation (Metropolitan Ticket),
- Cooperation as an option rather than after using the capacity of a single municipality
- Low level of trust towards Warsaw
- Limited interest in the new tool – „*let's just split the money*”

ITI's for the Warsaw Functional Area

Main challenges



- Overcoming the barrier of mistrust towards Warsaw
- The identification of common and acceptable development goals
- Rising the awareness of the benefits of working together (the success of the entire area as the success of each municipality)

ITI's for the WFA – ITI Partnership

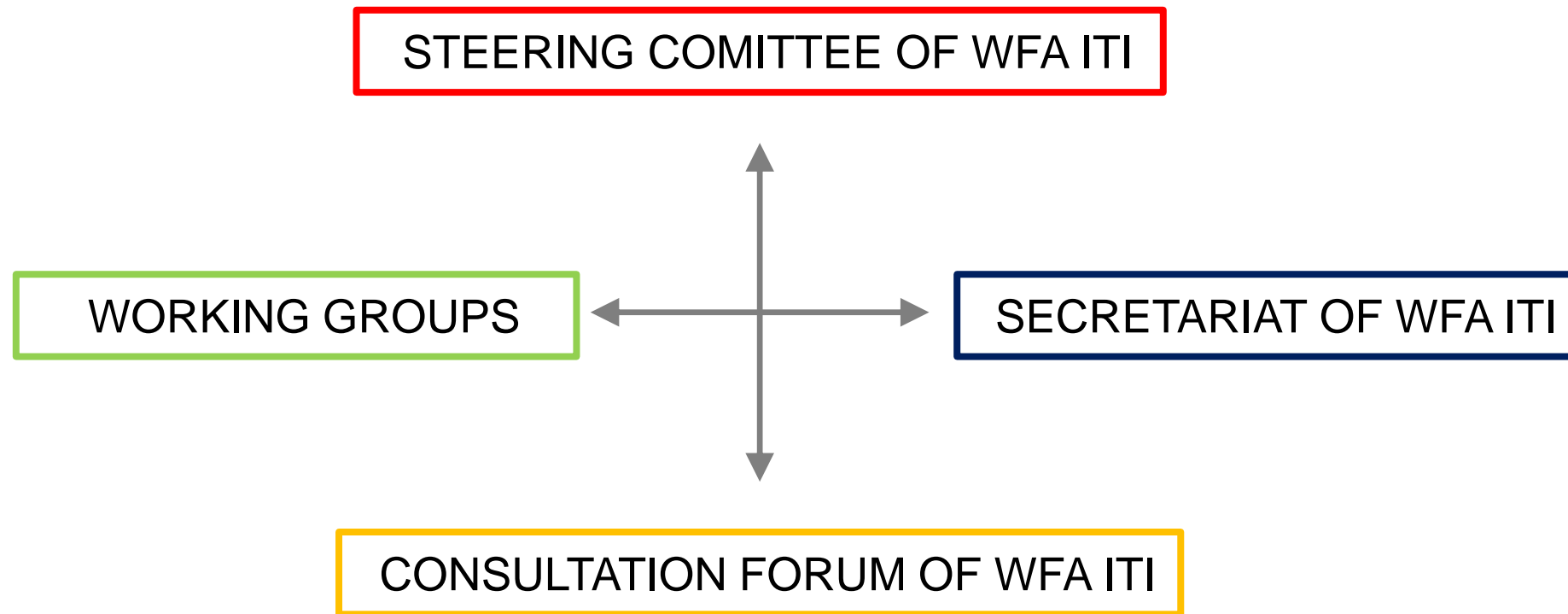


The agreement of municipalities of Warsaw Functional Area on cooperation in the implementation of the Integrated Territorial Investments in the EU financial perspective 2014-2020

- The agreement defines the organizational structure of the WFA ITI's and the tasks of individual bodies of the WFA ITI and the role of Capital City of Warsaw as the leader of ITI and Intermediate Body for ITI



ITI for WFA – organizational structure



ITI's for the WFA – ITI Strategy



The process:

- Strategy developed by officials
 - conscious decision ensuring attachment to the ITI Strategy
 - cooperation with all 40 communes – workshops, consultations, remarks, etc.
 - experts support – workshops moderation, evaluation
- Over 2 years of work (September 2013 – November 2015)
- IV versions of Strategy (changes in PA and ROP, remarks of Managing Authority and Ministry of Development)

ITI's for the WFA – ITI Strategy



Strategic Vision:

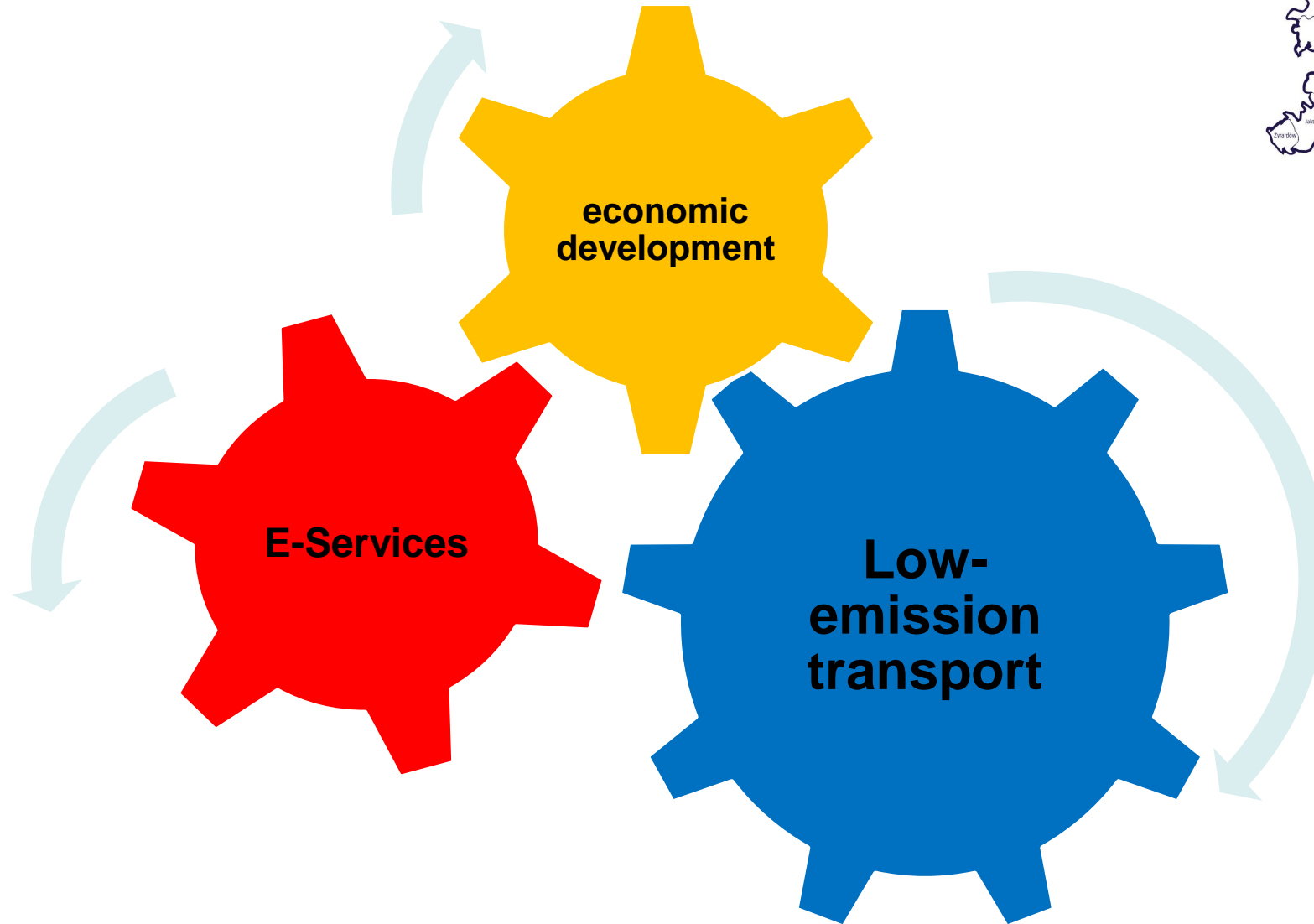
The Greater Warsaw is an energy vibrating European center of development where high living standards and perfect business conditions meet in the most balanced way – all based on the citizens' creativity, cooperation potential and new technologies

Strategic objectives:

- 1. Increasing the access to public services**
- 2. Developing economic networks**
- 3. Improving quality of public space**










ITI's for the WFA – thematic fields



Integrated Territorial Investments of the Warsaw Metropolis

Projects co-financed by EU funds, contracts signed in the period XI 2016-X 2020



	Bicycle routes	Park & Ride	Education & career counselling	General education	Care system for children under 3	E-services
number of projects	21	35	6	46	21	20
						
	467 km length of bicycle routes (built or reconstructed)	65 P+R parking lots 6 210 parking spaces	242 number of schools and other educational institutions supported	24 614 number of students supported 661 number of teachers supported	1743 new places of care for children under 3	182 new public e-services
value of EU co-financing in concluded agreements	361,1 mln PLN	127,9 mln PLN	7 mln PLN	36,7 mln PLN	45,9 mln PLN	103,4 mln PLN
value of EU co-financing within the approved expenses	228,3 mln PLN	67,5 mln PLN	3,2 mln PLN	22,6 mln PLN	28,2 mln PLN	7,7 mln PLN
the amount of EU funds for ITI (1 EUR=4,6225)	539,3 mln PLN		11,6 mln PLN	38,9 mln PLN	65,2 mln PLN	117,4 mln PLN

European Union subvention for 149 projects is 88,32% of amount designated for projects planned under Integrated Territorial Investments of the Warsaw Metropolis



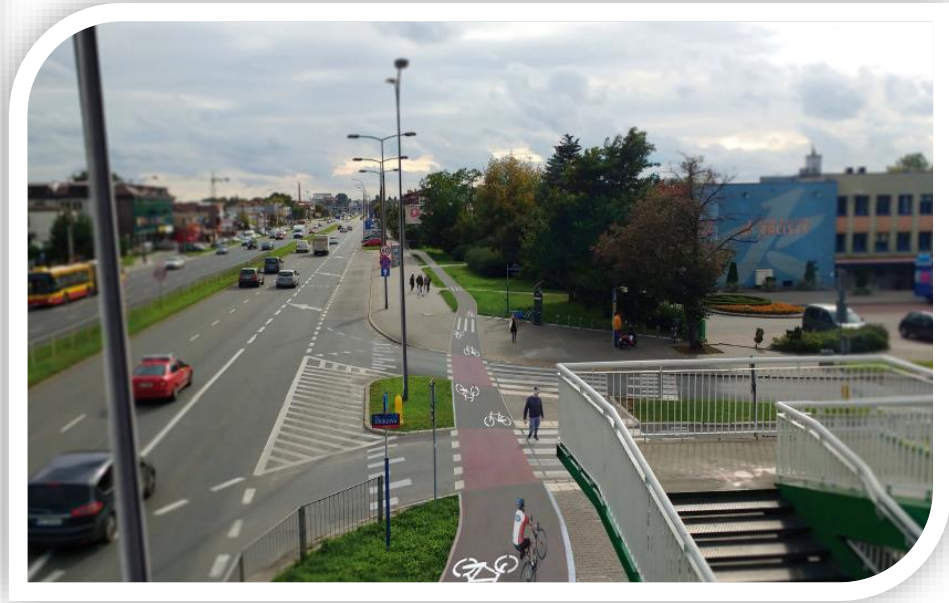
Republic of Poland



European Union
European Structural and Investment Funds



Integrated Territorial Investments for Greater Warsaw





Where are we now – change of approach



- Warsaw considered as a threat → Warsaw considered as a partner
- cooperation as a necessity → cooperation for benefits
→ cooperation as a value
- neighbors (me and others) → community (we)

- 

[illegible]

- 

Internal challenges



- Doubling number of partners from 40 to 79 municipalities and counties after 2020
- Changes in local authorities (40% of new mayors elected in 2018)
- Are we ready for next step? Extending the scope of thematic cooperation beyond ITI
- Readiness for self-financing?



Integrated
Territorial Investments
for Greater Warsaw

**Integrated
Territorial
Investments for
Warsaw
Metropolis**

**Thank You for
your attention**

Kamil Przyborowski
City of Warsaw
kprzyborowski@um.warszawa.pl
Małgorzata Kucińska
m.kucinska@um.warszawa.pl



Integrated Territorial Investments for Greater Warsaw